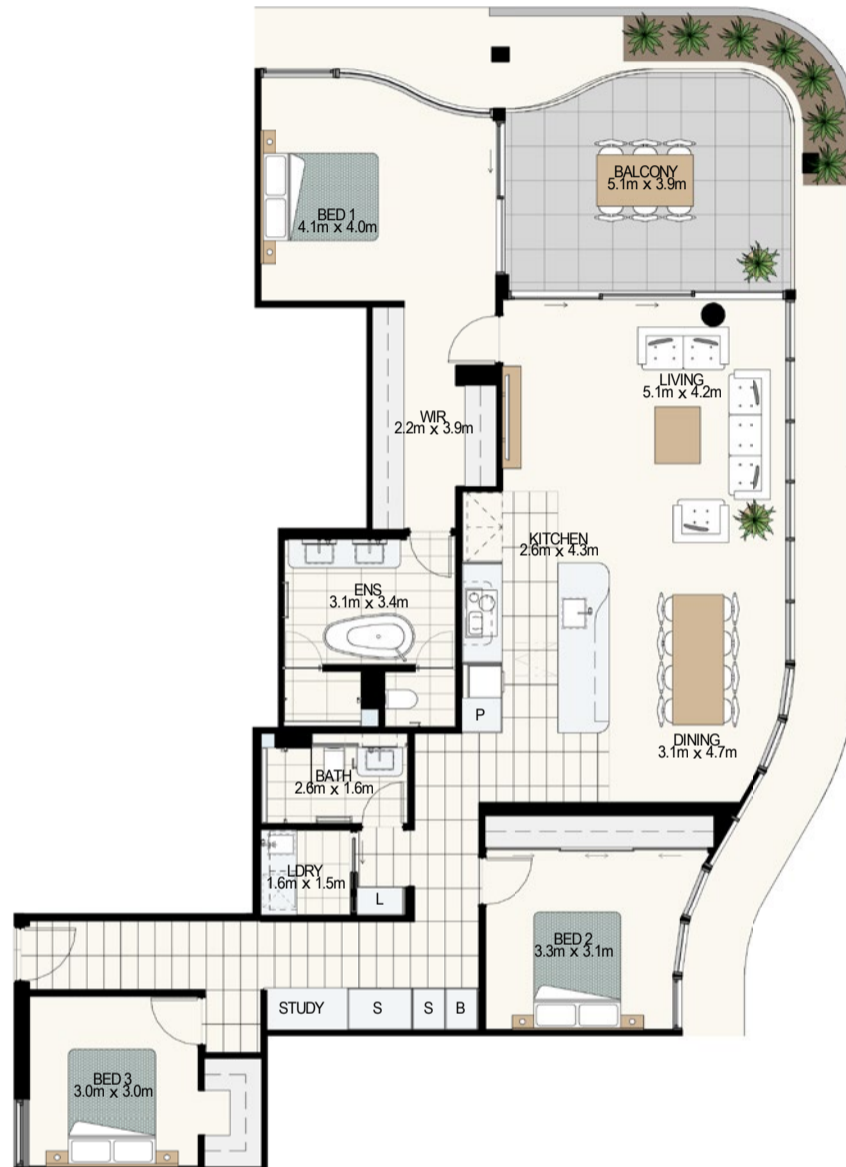


APARTMENT 104

TYPE D4B



	3	<p>Approx Area</p> <table border="0"> <tr> <td>Internal</td> <td>144m²</td> <td>Car Bays</td> <td>26m²</td> </tr> <tr> <td>Balcony</td> <td>19m²</td> <td>Total</td> <td>193m²</td> </tr> <tr> <td>Store</td> <td>4m²</td> <td></td> <td></td> </tr> </table>	Internal	144m ²	Car Bays	26m ²	Balcony	19m ²	Total	193m ²	Store	4m ²			<p>↑ North</p> <p>1:100 @A3</p>
	Internal		144m ²	Car Bays	26m ²										
	Balcony		19m ²	Total	193m ²										
Store	4m ²														
2															
2															

THE GARDENS

Disclaimer: Variations from strata plans may apply. Loose furniture is indicative only. Shape and configuration of living areas, balconies, wall structure, doors, windows, columns, air-conditioning condensers and ducts may differ from those illustrated. Apartment areas given are based on architectural measurements which may vary from strata areas as different methods of measurement are applied.